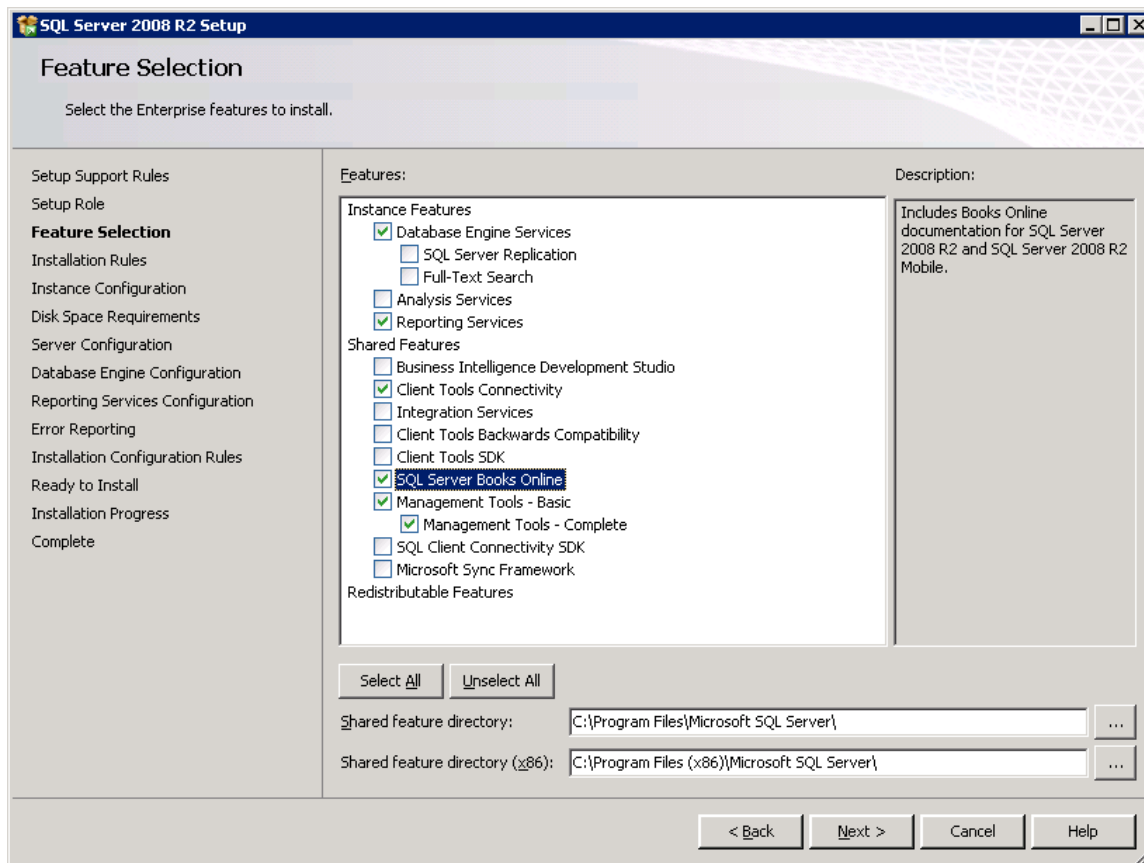


SQL2008 Server Installation and Configuration for SpeechMiner

SQL 2008 Enterprise Edition Installation:



SQL Server 2008 R2 Setup

Server Configuration

Specify the service accounts and collation configuration.

Setup Support Rules
Setup Role
Feature Selection
Installation Rules
Instance Configuration
Disk Space Requirements
Server Configuration
Database Engine Configuration
Reporting Services Configuration
Error Reporting
Installation Configuration Rules
Ready to Install
Installation Progress
Complete

Service Accounts | Collation

Microsoft recommends that you use a separate account for each SQL Server service.

Service	Account Name	Password	Startup Type
SQL Server Agent	sqlserviceaccount	••••••••	Automatic
SQL Server Database Engine	sqlserviceaccount	••••••••	Automatic
SQL Server Reporting Services	sqlserviceaccount	••••••••	Automatic
SQL Server Browser	NT AUTHORITY\LOCAL S...		Disabled

Use the same account for all SQL Server services

< Back Next > Cancel Help

SQL Server 2008 R2 Setup

Database Engine Configuration

Specify Database Engine authentication security mode, administrators and data directories.

Setup Support Rules
Setup Role
Feature Selection
Installation Rules
Instance Configuration
Disk Space Requirements
Server Configuration
Database Engine Configuration
Reporting Services Configuration
Error Reporting
Installation Configuration Rules
Ready to Install
Installation Progress
Complete

Account Provisioning | Data Directories | FILESTREAM

Data root directory: C:\Program Files\Microsoft SQL Server\ ...

System database directory: C:\Program Files\Microsoft SQL Server\MSSQL10_50.MSSQLSERVER\MSSQL\Data

User database directory: D:\MSSQLData ...

User database log directory: C:\MSSQLLOG ...

Temp DB directory: D:\MSSQLData ...

Temp DB log directory: C:\MSSQLLOG ...

Backup directory: D:\MSSQL\backup ...

< Back Next > Cancel Help

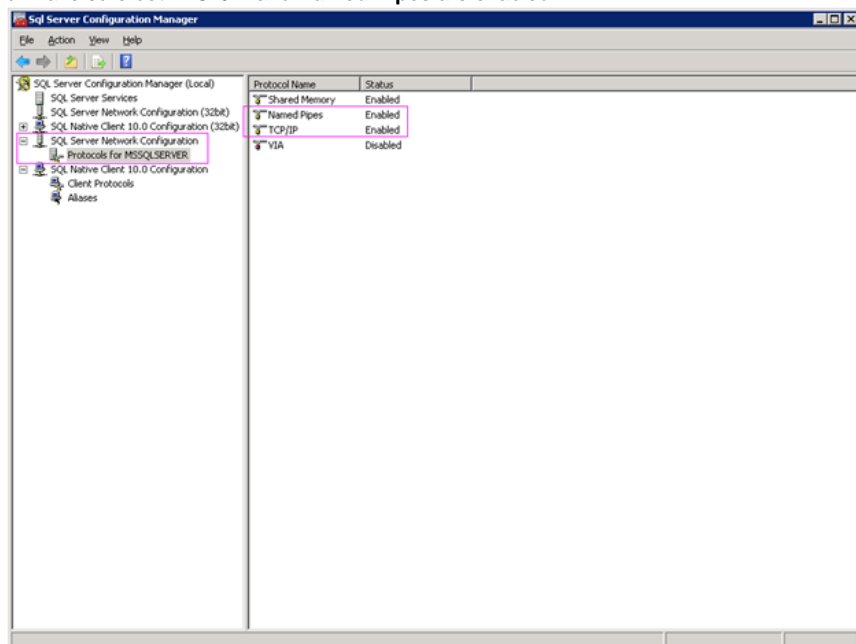
Don't forget to restart the machine after the SQL installation is completed.

Configuration: SQL Server

1. Go to Start menu, go to *Microsoft SQL Server 2008 -> Configuration Tools -> SQL Server Configuration Manager*

a. if you haven't done it during installation make sure **SQL Agent** is running and set to **Automatic**

b. Make sure both **TCP/IP** and **Named Pipes** are enabled.



2. Deploy CLR assembly. On new db servers you need to run the following sql commands under the Master in order to set the dll's permissions (make sure the user running SQL services has change permissions on sqlclr.XmlSerializers.dll):

```
CREATE ASYMMETRIC KEY SQLCLRTestKey FROM EXECUTABLE FILE =
'\\DB_SERVER\sqlclrDeploy\sqlclr.XmlSerializers.dll'
CREATE LOGIN SQLCLRTestLogin FROM ASYMMETRIC KEY SQLCLRTestKey
GRANT EXTERNAL ACCESS ASSEMBLY TO SQLCLRTestLogin
```

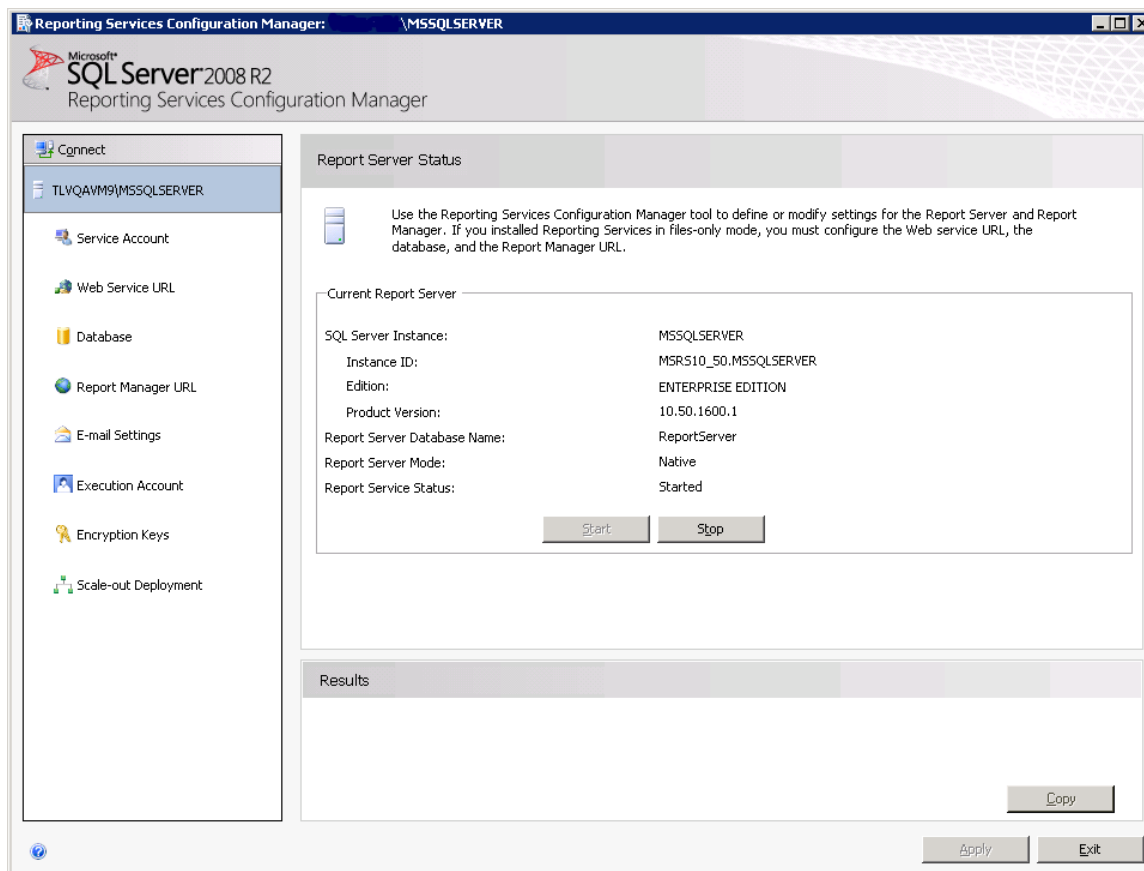
3. Enable **xp_cmdshell** and **CLR Integration** - run the following sql commands under the Master:

```
EXEC sp_configure 'show advanced options', 1
GO
RECONFIGURE
GO
EXEC sp_configure 'xp_cmdshell', 1
GO
EXEC sp_configure 'clr_enabled', 1
GO
RECONFIGURE
GO
```

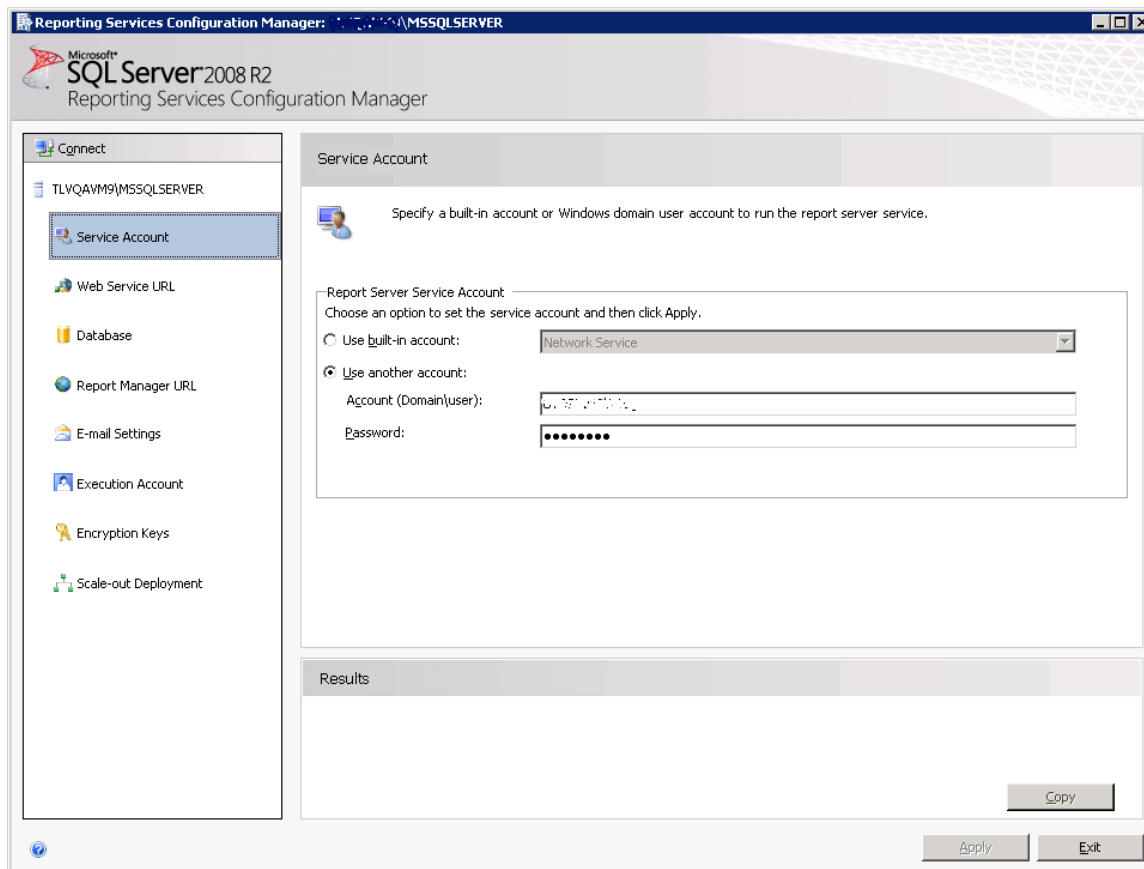
Configuration: Reporting Services

Go to Start, All Programs, SQL Server 2008, Configuration Tools, Reporting Services Configuration Manager.

Make sure the report server is started:



Under Services Accounts use a domain administrator user to run the service:



In Web Service URL fill as the below:

The screenshot shows the 'Reporting Services Configuration Manager' window for 'MSSQLSERVER'. The left-hand navigation pane lists several options: Connect, TLVQAVM9\MSSQLSERVER, Service Account, Web Service URL (which is selected and highlighted), Database, Report Manager URL, E-mail Settings, Execution Account, Encryption Keys, and Scale-out Deployment. The main pane is titled 'Web Service URL' and contains the following configuration sections:

- Report Server Web Service Virtual Directory:** A text box labeled 'Virtual Directory:' contains the text 'ReportServer'.
- Report Server Web Service Site identification:** This section contains four fields: 'IP Address:' with a dropdown menu showing 'All Assigned (Recommended)'; 'ICP Port:' with a text box containing '80'; 'SSL Certificate:' with a dropdown menu showing '(Not Selected)'; and 'SSL Port:' with an empty text box. An 'Advanced...' button is located to the right of these fields.
- Report Server Web Service URLs:** A text box labeled 'URLs:' contains the text 'http://localhost:80/ReportServer'.

At the bottom of the window, there is a 'Results' section, a 'Copy' button, and 'Apply' and 'Exit' buttons.

In Database:

The screenshot shows the 'Report Server Database Configuration Wizard' window, specifically the 'Change Database' step. The title bar reads 'Report Server Database Configuration Wizard'. Below the title bar, the text 'Change Database' is displayed, followed by the instruction 'Choose whether to create or configure a report server database.'.

The main area of the wizard is divided into two panes. The left pane, titled 'Action', lists the following steps: Database Server, Database, Credentials, Summary, and Progress and Finish. The right pane contains the following text:

Select one of the following options to create an empty report server database or select an existing report server database that has content you want to use.

Select a task from the following list:

- ☒ Create a new report server database.
- ☐ Choose an existing report server database.

At the bottom of the wizard, there are three buttons: 'Previous', 'Next', and 'Cancel'.

Report Server Database Configuration Wizard

Change Database

Choose whether to create or configure a report server database.

Action	Choose a local or remote instance of a SQL Server Database Engine and specify credentials that have permission to connect to that server.
Database Server	
Database	
Credentials	
Summary	
Progress and Finish	

Connect to the Database Server:

Server Name:

Authentication Type:

Username:

Password:

Report Server Database Configuration Wizard

Change Database

Choose whether to create or configure a report server database.

Action	Enter a database name, select the language to use for running SQL scripts, and specify whether to create the database in native or SharePoint mode.
Database Server	
Database	
Credentials	
Summary	
Progress and Finish	

Database Name:

Temp Database Name:

Language:

Report Server Mode:

☒ Native Mode

☐ SharePoint Integrated Mode

Report Server Database Configuration Wizard

Change Database

Choose whether to create or configure a report server database.

Action Database Server Database Credentials Summary Progress and Finish	<p>Specify the credentials of an existing account that the report server will use to connect to the report server database. Permission to access the report server database will be automatically granted to the account you specify.</p> <p>Credentials:</p> <p>Authentication Type: Service Credentials</p> <p>User name: \\SQLServiceAccount</p> <p>Password: </p>
---	--

Previous Next Cancel

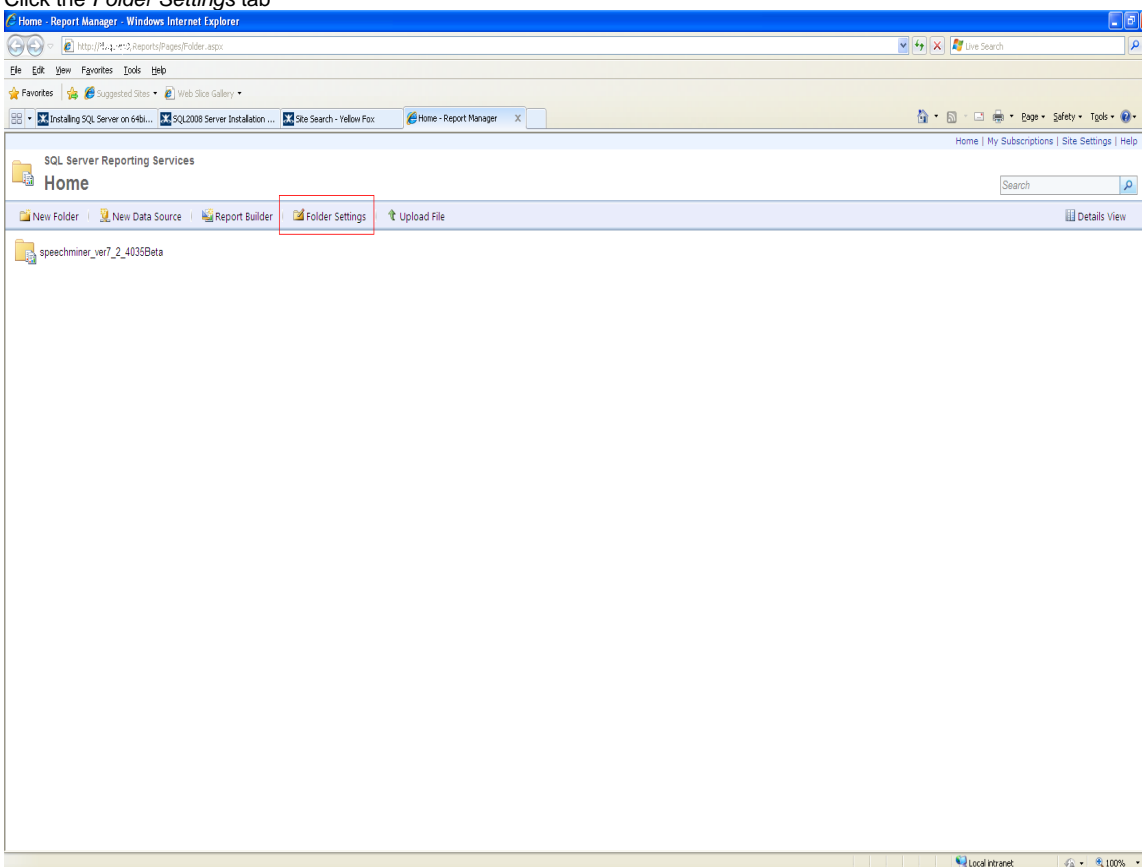
In Report Manager URL:

Reporting Services Configuration Manager: \\MSSQLSERVER

Microsoft SQL Server 2008 R2
Reporting Services Configuration Manager

Connect TLVQAVM9\MSSQLSERVER Service Account Web Service URL Database Report Manager URL E-mail Settings Execution Account Encryption Keys Scale-out Deployment	<h3>Report Manager URL</h3> <p>Configure a URL to access Report Manager. Click Advanced to define multiple URLs, or to specify additional parameters on the URL.</p> <p>Report Manager Site Identification</p> <p>Virtual Directory: Reports</p> <p>URLs: http://tlvqavm9-80/Reports Advanced</p> <p>Results</p> <p>Copy</p> <p>Apply Exit</p>
---	--

Point the browser to `\\<dbserver>/reports`

1. Click the *Folder Settings* tab

2. Note: If there is a problem to access this folder and you keep having to enter your user and domain credentials and eventually get a blank screen, do the following: In rsreportserver.config remove the value RSWindowsNegotiate and ensure RSWindowsNTLM is specified. (There is more information about this problem and some other solutions at <http://blogs.msdn.com/b/lukaszp/archive/2008/03/26/solving-the-reporting-services-login-issue-in-the-february-ctp-of-sql-server-2008.aspx>)
3. If the domain user used by SpeechMiner is not on the list, click on *New Role Assignment*, otherwise *Edit* the existing account
4. Give the account *Content Manager* role

Home

SQL Server Reporting Services

New Role Assignment

Use this page to define role-based security for Home.

Group or user name:

Select one or more roles to assign to the group or user.

Role	Description
<input type="checkbox"/> Browser	May view folders, reports and subscribe to reports.
<input checked="" type="checkbox"/> Content Manager	May manage content in the Report Server. This includes folders, reports and resources.
<input type="checkbox"/> My Reports	May publish reports and linked reports; manage folders, reports and resources in a users My Reports folder.
<input type="checkbox"/> Publisher	May publish reports and linked reports to the Report Server.
<input type="checkbox"/> Report Builder	May view report definitions.

OK Cancel

To enable remote access through SQL Management studio when Windows Firewall is on follow instructions at <http://msdn.microsoft.com/en-us/library/ms175043.aspx>

SQL Server Configuration Best Practices

Memory Usage - if not limited SQL server will consume all available memory, therefore it is recommended to limit the memory usage of the SQL Server,

It can be done by limiting the **max server memory**

It is important to note that the **max server memory** is not all the memory used by SQL Server process and therefore it is recommended to set that to 2-4GB less than the desired size

The following example sets the max server memory option to 4 GB:

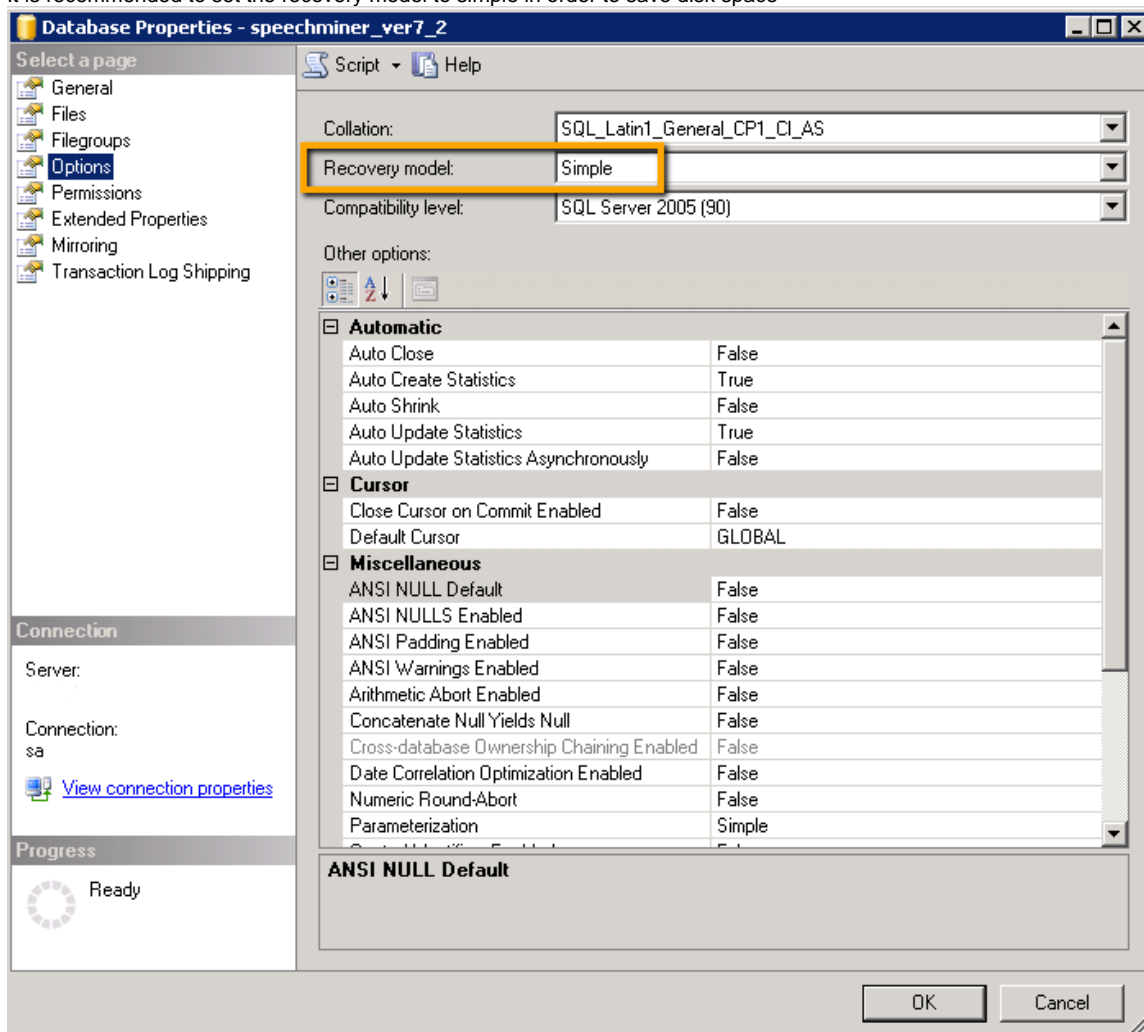
```
sp_configure 'show advanced options', 1;
GO
RECONFIGURE;
GO
sp_configure 'max server memory', 4096;
GO
RECONFIGURE;
GO
```

see more details at <http://msdn.microsoft.com/en-us/library/ms178067.aspx>

The users can also change the **max server memory** setting using GUI by right click on the server name -> properties -> memory

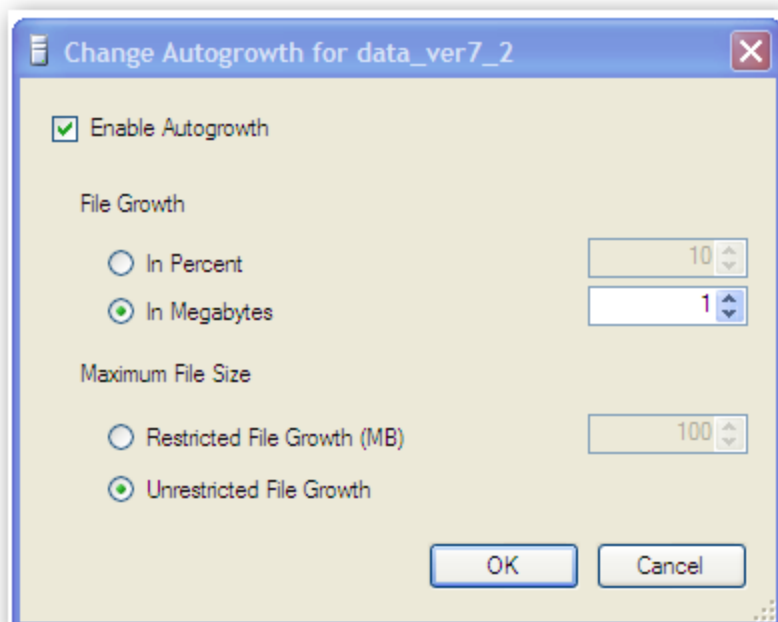
Recovery Model

It is recommended to set the recovery model to simple in order to save disk space



AutoGrowth

the default Autogrowth in SQL2008R2 is to enable Autogrowth of 1 Megabytes



we recommend changing that to 5 or 10 Percent.

